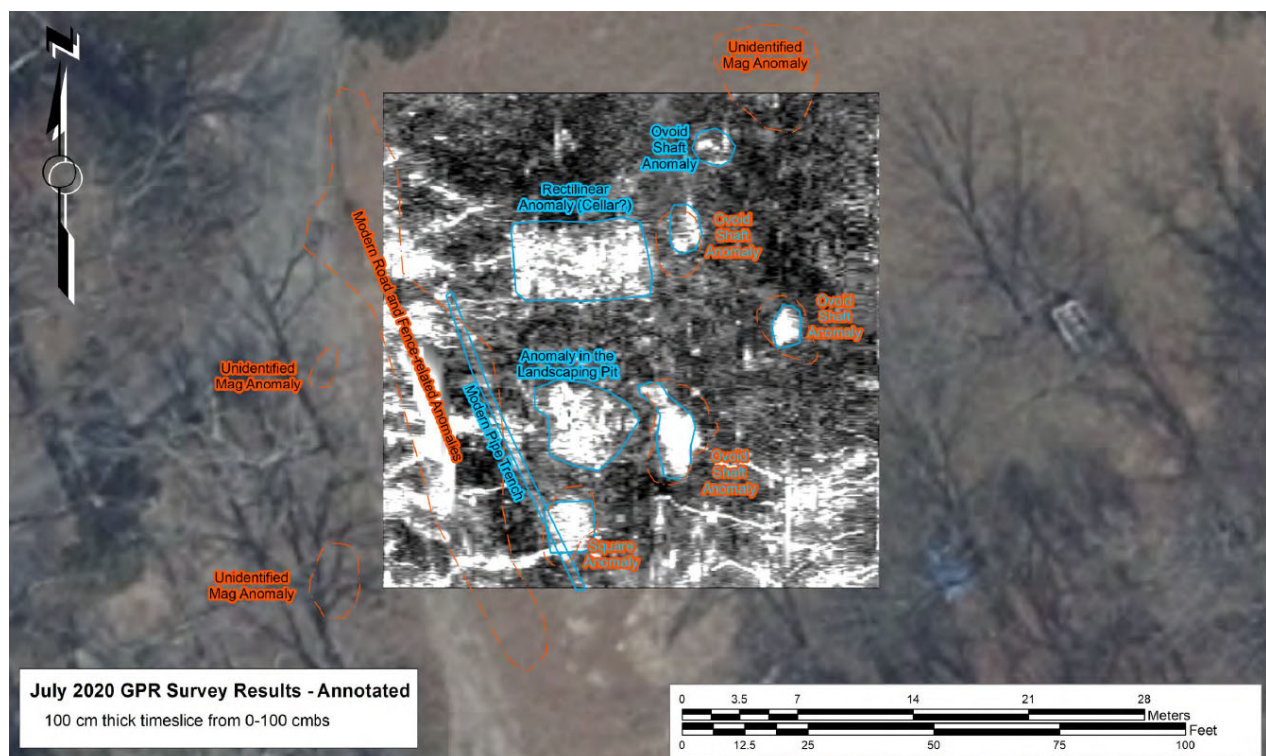
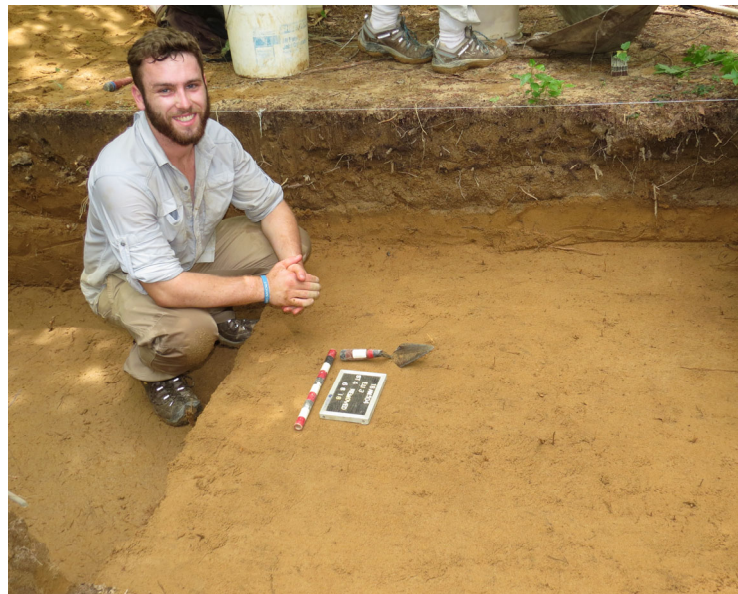


2021 Washington College Archaeology Field School May 17 – June 18

The Department of Anthropology is pleased to announce a **6-credit** archaeological field school [ANT 296] at an early colonial site that served as the first county seat of Caroline County. The area was also home to American Indian settlement and activity.

In partnership with the Maryland Historical Trust [MHT], students will conduct excavation at the Barwick's Ordinary site to "ground truth" locations of probable historic structures – cellars, privies, and storage pits – identified through MHT remote sensing surveys in 2019 and 2020.



Participants will engage in all phases of field archaeology and laboratory analysis, including site discovery techniques, surveying, stratigraphic excavation and recording. Working at Barwick's Ordinary provides students the unique opportunity to gain experience at a prehistoric **and** an historic site, all in one field school.

Tuition for the 2021 Archaeology Field School is \$2,250.

Washington College housing can be secured for an additional \$550.00.

For more information, to register, to schedule a site visit, or to volunteer, contact:
Dr. Julie Markin at jmarkin2@washcoll.edu