



watershed program



*Alumni & Parent
Volunteer Guide*

Table of Contents

Welcome!	4
What is the Watershed Program?	5
Goals for the Program	5
Getting Involved	5
<i>Alumni Volunteers</i>	5
<i>Parent Volunteers</i>	5
<i>Stay in Touch!</i>	5
Washington College Today	6
At-a-Glance Statistics	6
Current Messaging	6
<i>Return on Investment</i>	6
<i>The WC Standard</i>	7
<i>"Think Beyond" Campaign</i>	7
Signature Centers	8
<i>Center for Environment & Society</i>	8
<i>The Starr Center for the Study of the American Experience</i>	8
<i>The Rose O'Neill Literary House</i>	8
Athletics	8
<i>Sports</i>	8
<i>Resources</i>	9
Recent Additions to Washington College	9
<i>Hodson Boathouse</i>	9
<i>New Varsity Sports</i>	9
<i>River and Field Campus</i>	9
<i>Residential Upgrades</i>	9
<i>Outdoor Spaces Upgrade</i>	9

Understanding Recruiting	10
The Admissions Cycle	10
<i>Summer</i>	10
<i>Fall</i>	10
<i>Winter</i>	10
<i>Spring</i>	10
The Prospective Student Audience	11
<i>Tailoring Your Communications</i>	11
<i>Special Interest Groups</i>	11
Applications	12
<i>Applying</i>	12
<i>Enrolling</i>	12
<i>Decision Deadlines (ED, EA, RD) and the Difference</i>	12
<i>Scholarships and Programs</i>	13
Visiting Campus	14
<i>Weekday Visits</i>	14
<i>Open Houses</i>	14
<i>2023 Event Dates: Prospective Students</i>	15
<i>2024 Events: Admitted Students</i>	15
Off-Campus Opportunities	15
Working at a College Fair	16
College Fairs: An Overview	16
<i>What to Bring</i>	16
<i>What to Do</i>	17
Admissions FAQs	18
Thank you!	19

Welcome!

Thank you for volunteering your time with us in Admissions as a member of the Watershed Alumni & Parent Volunteer Program! We appreciate your help in recruiting prospective students.

Washington College alumni, and the families of our current students and alumni, provide some of the best information our prospective students can get. Prospective students and their families may look to you for guidance or confirmation that Washington College is the right choice, and your encouragement could help a student make a choice that puts them on the path to the best four years of their life.

I really love working with our alumni and parent volunteers. You have so much to offer, because you are proof of the success of the Washington College degree! The sense of community at Washington College doesn't go away after graduating, and due to the efforts of our volunteers this is evident to prospective students. We are lucky to have you!

This handbook is designed to serve as a reference guide for general information about the College and the structure of our Admissions Office. I know that it's a lot of information to take in at once, so please don't hesitate to reach out with any questions or concerns along the way! I look forward to working with you.

Jillian Curran
Admissions Counselor

P: 410-778-7700 x5808

C: 443-480-1526

jcurran3@washcoll.edu

What is the Watershed Program?

Goals for the Program

Do you remember when you decided Washington College was the place for you or your child? What a life-changing moment that was! Now, through the WC Watershed Program for Admissions Volunteers, you can work with Admissions to encourage and share your insights with prospective students and families.

As a Watershed volunteer, you'll have the chance to provide the one-on-one interaction, personal attention, and encouragement that can make the difference between a student choosing WC or enrolling at another college or university. Providing your perspective, and maybe that watershed moment, is key to our program's strength and success.

Getting Involved

We offer different activities for alumni and parent volunteers to get involved with.

Alumni Volunteers

Volunteer Opportunities

- Write notecards/emails to different high school student populations
- Nominate a student to apply or visit
- Submit a profile with your contact information to list on the Watershed program webpage
- Host/attend an Admissions event off campus
- Host off-campus meet and greets for applicants
- Participate in virtual Admissions events
- Attend a college fair in your area (we'll provide training and a WC nametag)
- Participate in on-campus events

Parent Volunteers

Volunteer Opportunities

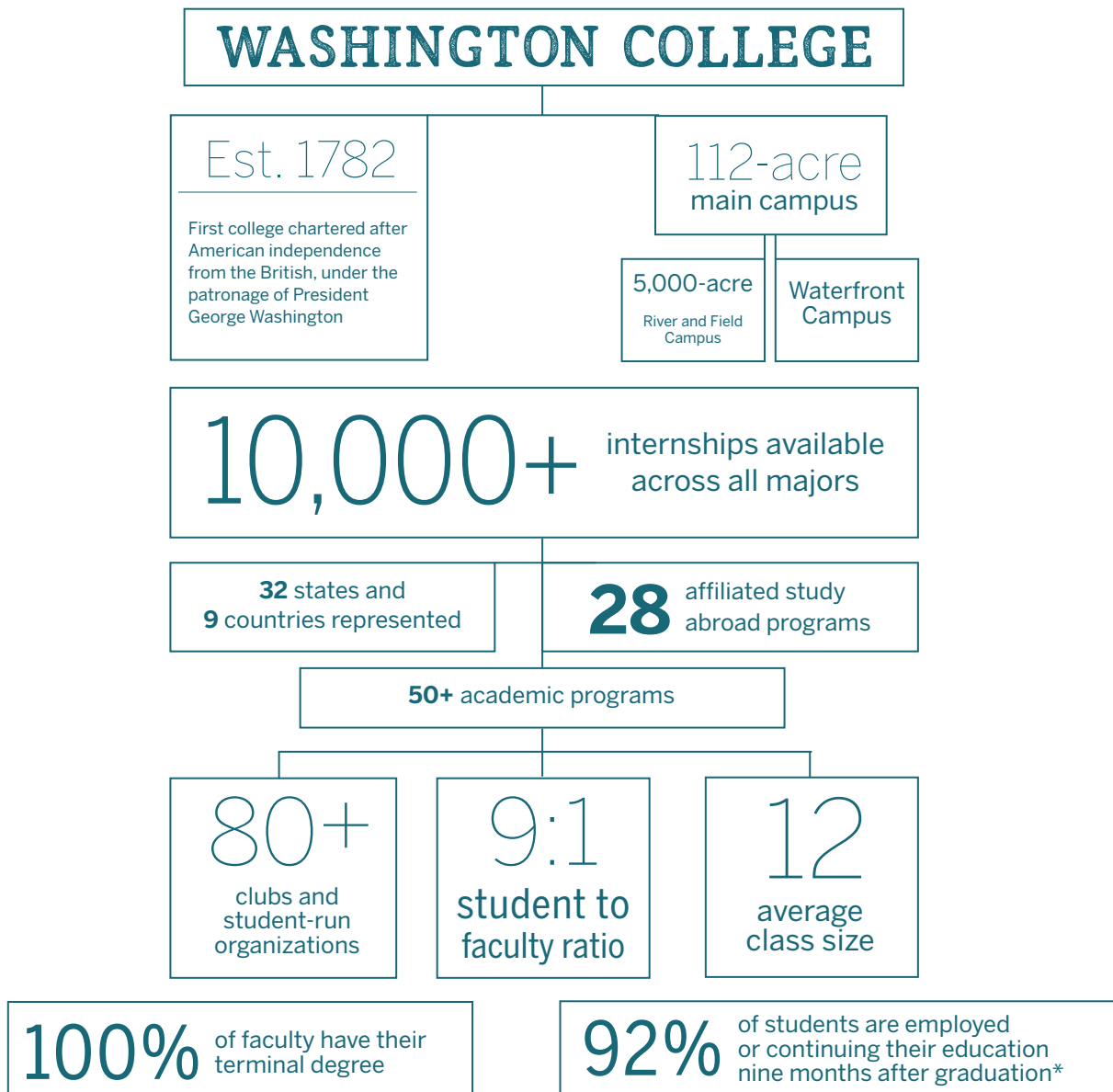
- Be assigned to the family of an admitted student and act as a resource for them through emails and phone calls
- Participate in area meet-up's to meet families of prospective students
- Participate in virtual/in-person events

Stay in Touch!

Keep an eye on your mailboxes, both digital and physical, for Watershed communications! Jillian Curran, our Watershed Program liaison, will be in touch with you periodically. The Admissions cycle changes throughout the year, and the needs of our office change along with it. Jillian will reach out to you to share our precise needs and will happily answer your questions about focus and how to talk to different populations.

Washington College Today

At-a-Glance Statistics



Current Messaging

Return on Investment

Washington College takes pride in the one-on-one approach our professors are able to give our students. From our intimate class sizes to our incredible hands-on internships, our students graduate with the experience needed to be competitive in their postgraduate endeavors. We believe that the skills, knowledge, opportunities, and connections afforded by a Washington College education provide a lifetime of benefits that are worth the rising cost of higher education at a private liberal arts college.

The WC Standard

Five pillars provide the foundation of a Washington College education. They create well-rounded students, form the unparalleled WC experience, and inspire successful graduates. We call these foundational principles the Washington College Standard.

1. Learning Without Limits

Our students and alumni follow their passions and are always finding new ways to synthesize the things they love. Whether it's landing the perfect internship, traveling the world on Chesapeake Semester, or doing field research right here on the River and Field Campus, a Washington College education is never confined to the classroom. By providing hands-on learning and meaningful job experiences alongside traditional instruction, we encourage students to craft the education that's right for them.

2. The Written Word

No matter the major, all Washington College students graduate with the ability to communicate clearly in writing. From our inclusive first-year writing seminars to the extensive literary lecture series offered by the Rose O'Neill Literary House, and even to applications for our Sophie Kerr Prize, opportunities for student writers are never restricted to the English department.

3. Environmental Action

With guidance from the Center for Environment & Society, we work hard to keep Washington College a sustainable, environmentally friendly campus. Student initiatives like our Back to Tap Program, Bike Share, and Food Recovery Network give our whole campus community the chance to pitch in and make the world a better place. On top of that, our Campus Garden is the first certified Bee Campus USA in Maryland.

4. History Informing the Future

Washington College has provided a solid liberal arts and sciences education since 1782, but that doesn't mean we're stuck in the past. The Starr Center for the Study of the American Experience explores the American experience in all its diversity and complexity, offering talks and other public programs by leading historians. This center offers a robust internship program called Explore America Summer Internships, which place WC students from all departments at the nation's top cultural institutions, like the National Archives, the National Portrait Gallery, the Smithsonian American Art Museum, and George Washington's Mount Vernon.

5. Meaningful Connections

At Washington College, you'll never feel like a number. With a close-knit student body and a student-to-faculty ratio of 9:1, your professors won't just know your name, but also your specific passions and interests. You will likely run into them in town or at one of our many local events. Whether it's students, staff, faculty, or alumni, Washington College is a family. Everyone who comes to WC is a part of our family for life.

“Think Beyond” Campaign

When you consider Washington College, think beyond your definition of college. Think beyond classrooms and clubs. Think beyond residence halls and campus. Washington provides an experience that is focused on giving you a rigorous education with myriad opportunities to build experience in the real world in an unmatched location, all designed to propel you toward success. As Maryland's premier small college, we give you everything you expect from one of America's top liberal arts colleges- challenging academic programs, a quality campus experience, and preparation for careers or graduate programs- but Washington also provides an incredible range of unique experiential learning opportunities that gives our graduates an advantage as they think beyond their college career.

Signature Centers

Center for Environment & Society

CES offers internships and fellowships in areas related to environmental protection and preservation. The Center works out of our Living Building Certified Semans-Griswold Hall which is a regional hub for hands-on research along the Chester River. CES oversees the 5000-acre River and Field Campus and is home to the Chester River Watershed Observatory, and the Foreman's Branch Bird Observatory.

The Starr Center for the Study of the American Experience

The Starr Center offers educational programs, scholarships, and public outreach while focusing on American written history, both past and present. It also works to bridge the gap between the academic world and the public through multimedia programming, including its most prominent program, the Chesapeake Heartland Project. Chesapeake Heartland is an African American humanities project dedicated to preserving, digitizing, interpreting, and making accessible materials related to African American history and culture in Kent County, Maryland and beyond. In collaboration with the National Museum of African American History and Culture, Washington College's Starr Center for the Study of the American Experience, and a diverse array of local organizations, Chesapeake Heartland seeks to build a model of grassroots preservation, curation, and interpretation for communities across the region.

The Rose O'Neill Literary House

The Lit House is one of the campus's cultural hubs. It offers literary programming across disciplines, spaces to study and to hold class, professional mentorship and guidance for students, and training in new and antique printing technologies. The Lit House helps students grow as artists and envision the lives they can have as writers, editors, and publishers through internships in literary editing, journalism, and publishing. It hosts a year-round salon of writers of international caliber. In the past it has hosted writers such as Neil Gaiman, Toni Morrison, and Claudia Rankine.

Athletics

Sports

A Division III member of the NCAA, Washington College sponsors 20 intercollegiate teams, 16 of which compete in the Centennial Conference. The men's and women's rowing teams compete in the Mid-Atlantic Rowing Conference (MARC), the sailing team competes in the Inter-collegiate Sailing Association (ICSA) and its Middle Atlantic conference (MAISA), and the trap and skeet team competes for conference and national championships within the ACUI Clay Targets program.

Varsity

MEN'S	WOMEN'S	CO-ED
Baseball	Basketball	Sailing
Basketball	Field Hockey	Trap and Skeet
Golf	Golf	
Lacrosse	Lacrosse	
Rowing	Rowing	
Soccer	Soccer	
Swimming	Softball	
Tennis	Swimming	
	Tennis	
	Volleyball	

Club Sports

MEN'S	WOMEN'S	CO-ED
Lacrosse	Field Hockey	Equestrian
Rugby	Lacrosse	Fencing
	Volleyball	Mixed Martial Arts
		Sailing
		Soccer
		Tennis
		Trap and Skeet
		Ultimate Frisbee
		Volleyball
		Watersports

Intramural

Basketball
Badminton
Beach Volleyball
Disc Golf
Dodgeball
Flag Football
Floor Hockey
Indoor Volleyball
Kickball
Outdoor Soccer
Pickleball
Ultimate Frisbee

Resources

We frequently assess and update our campus athletics facilities to ensure that student-athletes have access to great equipment, spaces, and trainers. Our athletics resources include:

- Indoor and outdoor tracks
- Indoor Olympic-size pool
- State-of-the-art FieldTurf field for lacrosse, soccer, and field hockey
- Bermuda grass baseball field
- Softball field
- Recently renovated indoor courts for basketball
- Tennis pavilion
- State-of-the art weight room with access to three strength and conditioning coaches
- Newly opened Boathouse with locker rooms and indoor rowing tanks

Recent Additions to Washington College

Hodson Boathouse

Our newly renovated Boathouse provides more space for our waterfront rowing and sailing teams, including team locker rooms, coaches' offices, a team lounge, a classroom, indoor rowing tanks, and rowing machines overlooking the Chester River. As part of our commitment to sustainability, it is heated and cooled by an energy-efficient geothermal well system and the deck is made of recycled plastic.

New Varsity Sports

The newest addition to our varsity sports, the golf team begins competing in the Centennial Conference this year (2023). Women's and men's cross country and indoor and outdoor track and field will begin competing at the club level in fall 2024 and then at the varsity level in 2025.

River and Field Campus

Formerly known as Chino Farms, the River and Field Campus encompasses 5,000 acres of land, including a working farm, a bird banding station, and access to Chester River waterfront, meadows, hardwood forests, ponds, grasslands, marshes, and riverine habitat. It is open to interdisciplinary research and provides students with a living laboratory.

Residential Upgrades

The college recently renovated freshman residential hall, Minta Martin, and the apartment-style Western Shore residential halls. The Western Shore suites now have new floors and an upgraded kitchen with a stove and oven.

Outdoor Spaces Upgrade

In the summer of 2023, the college undertook a number of outdoor space upgrades around campus. The terrace outside of Miller Library is being entirely redone in order to be more accessible, a beach volleyball court was installed on the hill overlooking Kirby Field, and new adirondack chairs were placed in different spots around campus.

Understanding Recruiting

The Admissions Cycle

Summer

During the summer, Admissions counselors focus on maintaining the admitted student population. Admissions counselors and volunteers provide support to enrolled students—answering questions, helping them sort out housing, ensuring they attend summer advising, and the like. We also begin our outreach to the upcoming junior class with special days like Summer Preview Day and summer programs designed for high school students.

Events:

- Flock Together Advising Days
- Summer Preview Day
- Summer Conferences

Fall

Fall is a major season for recruitment. This is when we begin narrowing our pool of potential applicants and building one-on-one relationships. Recruiting focuses primarily on high school seniors, and we strongly encourage campus visits. This is also the travel season for Admissions counselors, who attend college fairs nationwide.

Events:

- Fall Friday Open Houses
- Off-campus college fairs
- Saturdays on the Shore Open Houses
- November Open House

Winter

This is the season when we “seal the deal,” so to speak. The focus during winter is primarily on driving applications and selecting our admitted students. Interviews and campus visits are encouraged during this time, and one-on-one interaction with interested students is the most important focus.

Events:

- Off-campus receptions for seniors and admits/enrolls

Spring

Driving enrollment is the primary focus in spring. The deadline to enroll is May 1, and although we do accept late enrollments, we encourage students to enroll as far in advance as possible. Most events on campus are tailored to admitted students and are designed to give an overview of the best parts of WC. Financial aid consultations and interviews for scholarships are a big part of spring Admissions support, as are an uptick in high school visits.

Events:

- Presidential Fellows Open House
- Liberal Arts and Sciences Day
- Washington Scholars Overnight
- Admitted Students Day
- Spring Fridays

The Prospective Student Audience

Tailoring Your Communications

Depending on the group you are communicating with, you may want to alter your communication strategy and focus.

When speaking to prospective students who have not yet applied to Washington College, communications may focus on driving campus visits, answering general questions about college and the application process, and encouraging the student to learn more. General information about Washington College and your personal experience with the school will speak volumes.

Speaking to applicants who have applied but not yet been accepted to Washington College is generally the same as speaking to prospective students. Visiting campus is still important, as are answering questions. Maintaining communication with applicants while we process their applications is crucial!

Admitted students have been accepted into Washington College but have not yet decided to attend. Communications should emphasize what sets Washington College apart: our facilities, our athletics programs, our scientific community, the Signature Centers, and anything else that may be of interest to that particular student. Stressing visits to campus, especially for our Admitted Students Day, is incredibly important!

Enrolled students have put down their deposit and joined the upcoming class. The focus for these students is contact! Reaching out and answering any last-minute questions the student might have, encouraging them through their college preparation, and emphasizing how excited you are that they are coming to campus in the fall should be your communication focus.

Parents and guardians require a different communications approach entirely. Many parents and guardians are worried about the particulars of a college education: cost, safety, educational opportunities, and the potential for employment or continuing education after graduation. Emphasizing how you or your student has benefitted from a Washington College education, even after graduation, is a good approach to take.

Special Interest Groups

Transfer Students

Washington College accepts transfer students at the beginning of the fall and spring semester. Transfer admission is rolling based on availability. We have articulation agreements that allow for specific types of credit transfer with six Maryland community colleges: Anne Arundel Community College, Carroll County Community College Honors Program, Chesapeake College, Howard County Community College Rouse Scholars, Montgomery College, and Prince George's Community College Honors Academy.

International Students

Washington College recruits students from around the world, whose diverse perspectives are strongly valued on campus. In our most recent academic year, we hosted students from 18 different countries!

Applications

Applying

Students can apply to Washington College through the WAC App and Common App, these applications do not have fees associated with them, so it will not cost a student to apply. There is no difference in consideration between the Washington College App and the Common App.

Materials

To be considered for admission, students must submit:

- Completed and signed application form
- Admission essay/personal statement
- SAT or ACT scores or a test-optional form*
- One counselor recommendation
- Official transcript

Additional recommended materials include:

- Teacher recommendation
- Activities sheet or résumé

* Students submitting SAT or ACT scores may share either official or self-reported scores. Students sharing self-reported scores will not be required to submit official score reports unless they are admitted and choose to enroll. You are able to self-report test scores through both the WC Application and the Common Application. To be considered official, scores must be sent to Washington College directly from the testing agency.

Test-Optional Application

Although SAT and/or ACT scores can, in some cases, help to inform the review process, we believe that students with a strong record of academic performance should not be penalized by test results that are inconsistent with their grades. With this in mind, we have instituted a Test-Optional policy for applicants.

Students wishing to apply Test-Optional may do so by submitting an online form. They can contact their Admissions counselor for more information.

Enrolling

Admitted students must enroll by May 1. Enrollment is secured with a \$350 non-refundable enrollment deposit and the Commitment to Enroll Form.

Decision Deadlines (ED, EA, RD) and the Difference

There are three different deadlines in the admissions process: Early Decision (ED), Early Action (EA), and Regular Decision (RD).

Early Decision

Application Deadline: November 15

Binding: Yes

About: Early Decision is a binding application process that requires a student's commitment to enroll. Students should be encouraged to apply Early Decision only if they are confident that Washington College is the right school for them. If a student is unsure, then Early Action or Regular Decision is a much better choice.

Early Action

Application Deadline: December 1

Binding: No

About: Early Action gives students more and better scholarship consideration and guarantees a much earlier response than Regular Decision. The largest percentage of Washington College students apply Early Action.

Regular Decision

Application Deadline: February 15

Binding: No

About: This is the last date that students can apply to Washington College. This is the “normal” application process.

Scholarships and Programs

For a more comprehensive list of scholarships, please visit washcoll.edu/scholarships or contact the Admissions Office.

Financial Aid

Washington College does its best to meet the financial needs of all students. Our Financial Aid Office will work with students and parents to determine the best course of action. Students with questions about financial aid should be encouraged to contact their Admissions counselor or the Financial Aid Office.

Presidential Fellows

First-year students who have demonstrated academic excellence and involvement throughout high school may be eligible to apply for the Presidential Fellows Program. The Presidential Fellows Program offers unique learning and exploration opportunities, priority course registration, possible additional scholarship dollars, and so on.

Merit Scholarships

Four-year tuition scholarships may be awarded to full-time students with a high school record of academic excellence. Annual awards can range up to \$36,000.

Washington Scholars

Students with demonstrated financial need and a track record of academic excellence may be eligible to join the Washington Scholars at Washington College. The Washington Scholars Program meets the full need of a small number of high-achieving, high-need students from Maryland and provides additional, specialized support designed to help them excel through four years of undergraduate education.

Honors Fellowships

The **Environment and Society Fellowship** is a renewable \$1,500 scholarship awarded annually to high-achieving incoming students with an interest in the environment. Environment and Society Fellows also receive priority consideration for CES internships and the Chesapeake Semester program.

The four-year **Sophie Kerr Scholarship** awards \$1,500 tuition scholarships annually to entering students who intend to major in English and who show outstanding promise in the field of English or American literature. Scholarship finalists are selected by members of the English Department.

Quill and Compass Scholarships are awarded to admitted students interested in exploring history, political science, and American studies. Recipients receive a \$1,500 tuition scholarship, renewable annually for four years, and access to exclusive programs for Quill and Compass scholars.

The \$2,500 **Cincinnatus Scholarship**, awarded through the Institute of Religion, Politics and Culture, is renewable and awarded annually to one admitted student with a strong interest in the study of religion's

influence on American and world history, as well as its contemporary importance for cultural and political life. This scholarship also includes an extra \$5,000 stipend.

Honor Society Scholarships

All National Honor Society, Cum Laude Society, and Phi Theta Kappa Honor Society members who are admitted to Washington College are awarded a Washington College Academic Tuition Scholarship of at least \$30,000 annually for up to four years, contingent on GPA. To qualify, students must be members of those honor societies at the time of admission to the College.

Visiting Campus

Weekday Visits

We offer daily in-person visit options Monday through Friday. When a student signs up for a visit, we suggest they start with an information session followed by a campus tour led by a tour guide. Information sessions are presented by an Admissions counselor and give visiting high school students an overview of a Washington College education, including general statistics, scholarship information, how to apply, and upcoming campus events.

For students who want a more personalized visit, we offer plenty of opportunities to schedule special topics meetings alongside a traditional tour or information session. These meetings provide in-depth information about WC's specific programs or services, like our Signature Centers, Academic Resources and Support, Student Services, Clubs and Organizations, or Career Center.

Student visitors looking to give their visit more of an academic focus should consider shadowing a class. Students can select their class from the day's options and get the chance to experience what it's like to be a student at Washington College. Class shadows are only available on days when classes are scheduled (fall and spring semesters).

We also offer on-campus interviews for visiting juniors and seniors. While not mandatory, these interviews are highly encouraged and provide a great way for students and their parents to have their questions answered about the school, admissions process, or financial aid.

Open Houses

Open houses are designed to give visiting students the absolute best Washington College experience. Fall open houses are geared toward prospective students, while spring open houses are designed to encourage admitted students to enroll. An open house usually includes a campus tour, lunch in the dining hall, and information sessions tailored to the specific student audience.

2023 Event Dates: Prospective Students

Saturday on the Shore: Saturday, September 23

Fall Friday: Friday, September 29

Saturday on the Shore: Saturday, September 30

Fall Friday: Friday, October 20

Saturday on the Shore: Saturday, October 21

Fall Friday: Friday, October 27

Saturday on the Shore: Saturday, October 28

Fall Friday: Friday, November 10

November Open House: Saturday, November 11

2024 Events: Admitted Students

The spring semester is full of special opportunities for students who have been admitted to WC to join us on campus to get a first-hand look at life as a Washington College student. These days consist of open houses, scholarship interviews, class visits, receptions, overnight visits, and more. In April, all admitted students will be invited to campus for a special day celebrating their acceptance to WC with one last chance to visit every corner of campus prior to making their college enrollment decision. More details on these events will be shared as they become available.

Off-Campus Opportunities

High school visits give counselors the chance to visit with high school students in a closer, less structured way than college fairs. Running a booth at a college fair gives you the chance to interact with students you know are interested and to show what Washington College provides that other colleges may not. The target audience for a college fair will be different depending on location—some fairs are for current high school students, while others held at community colleges are for transfers. Please see the college fair guide for more information on how to excel as a college fair volunteer.

Off-campus interviews afford an interview opportunity for students who may not be able to make it to campus in advance of the application deadline. Interviews generally consist of the interviewer giving a brief overview about Washington College and then asking the student questions.

Questions for a student interview might include:

- What are your academic interests?
- What activities are you involved in outside of school?
- What are you looking for in a college?
- Why do you think you would be a good fit for WC?
- What makes you unique?
- How would your teachers describe you?
- How would your friends describe you?
- What frightens you the most about college?
- What questions do you have for me?

Off-campus receptions are hosted by Admissions staff and may feature special guests like President Sosulski and the heads of Signature Centers. This is a good opportunity for prospective or admitted students to meet with past and present Washington College students and ask in-depth questions about the Washington College experience. Receptions are usually casual or business casual and frequently provide light fare. Encourage students to keep an eye on their mail for off-campus reception opportunities.

Working at a College Fair

The college fair is one of the best ways to recruit students, and we want to ensure that Washington College volunteers who choose to participate are fully prepared in advance.

College Fairs: An Overview

For those who didn't attend one during your own high school days, college fairs are a chance for multiple colleges to showcase themselves to a large number of prospective students in a short amount of time. Think of them as the speed-dating of the college search world. They provide larger exposure for colleges and often include visiting students from multiple high schools in a district or region.

Lasting approximately two hours, each fair offers students a chance to gather materials about the school, meet a friendly face, and ask preliminary questions. College fairs are also a great way to meet students who may not be able to visit campus because of distance.

Most college fairs geared toward high school seniors and college transfer students happen in the fall, before application deadlines. College fairs that take place in the spring are usually geared toward high school juniors and are primarily a chance to push visits and raise awareness for a college.

What to Bring

When you sign up to run a table at a college fair, we will send you a kit of the materials you will need. A completed Washington College table at a fair should look something like this.:

Your kit will include:

- Washington College tablecloth
- Your nametag
- Pens
- Business cards for the counselor in the territory you are representing
- Inquiry cards
- Near Travel Piece and Far Travel Piece

What to Do

Setting Up

1. Arrive 25–30 minutes early for set-up!
2. Check in with the College Representatives table. They will show you to your table.
3. Set up your table.
4. Don't forget to take a bathroom break before the start of the fair!
5. Man your table. Be outgoing, friendly, and accommodating—see below for conversation tips.
6. Pack up your table at the end of the day. Some college fairs give out surveys. If you receive one, make sure to complete it and return it to the College Representatives table.
7. You survived — great job!



Generating Conversation

1. Introduce yourself.
2. Ask the student's name, if they have ever heard of WC, and what they are interested in. Make sure you are familiar with the materials on the table so that you can help direct the student to a resource that will provide further information about their interests!
3. Be yourself! Students are hearing about the academic excellence of every college at the fair, and you're uniquely positioned to tell a story that's more than a brochure. A quick story about your or your student's time at WC has the potential be more valuable than any travel piece at that fair, so don't be afraid of authenticity.
4. Students will have a lot of questions. Familiarize yourself with the FAQs. Be up-front about anything you can't answer, and let students know that they can fill out an inquiry card so we can send them more information. Inquiry cards are essential to our recruiting process, so don't skip them!
5. Give out counselor business cards to the students who seem serious about their Washington College interest.
6. Make sure you give the student time to talk and ask you questions!

Admissions FAQs

Below are questions that are commonly asked by prospective students and their families. Brushing up on these questions and answers will give you a leg up at recruiting events!

How do I apply to Washington College?

Students can apply to Washington College through the Washington College Application or the Common Application. There is no fee to apply to Washington College regardless of how students apply. They will need to submit an essay, counselor recommendation, transcript, and SAT/ACT scores or a Test-Optional form.

What are your top five majors?

Historically, our most popular majors have been Business Management, Biology, Political Science, Psychology, and Environmental Studies & Science.

What do students do on the weekends?

Many of our students stay on campus over the weekend. Students attend athletic events, club events, and events hosted by the Student Events Board (SEB), explore downtown Chestertown and the waterfront, or attend First Friday. We are not considered a suitcase school, meaning that many students are not commuters or do not go home on the weekends.

What are classes like at WC?

Most of our courses are designed to be discussion based. This means that it is often up to the students to facilitate class. Our professors want our students to learn from doing rather than from constantly staring at a lecture screen. All of our science courses include a lab component as well.

Do you have Greek life on campus? If so, what is it like?

Yes. About 25% of students are involved in our two fraternities and three sororities. Many of our students who participate in Greek life are also involved in many different aspects of campus life, such as clubs, honor societies, and athletics.

What are your athletics and clubs like?

All of our athletics are DIII. Here at Washington College, we are students first, then athletes—which means we value our education first and foremost. We offer a mix of varsity, club, and intramural sports on campus. Washington College has more than 80 clubs for students to be involved in. Students are also able to start their own club on campus. We host a club fair at the beginning of the fall semester for students to learn more about each one.

What are the general education requirements?

All of our students complete the same general education and distribution courses. These courses include a freshman-year writing program, one or two courses in a foreign language, three courses in natural sciences and quantitative skills, three courses in the humanities and fine arts, and three courses in the social sciences.

Should I take the SAT or ACT, or apply Test-Optional?

We will accept either the SAT or the ACT. Our average SAT score is a 1250, and our average ACT score is a 27. We also have the option to apply Test-Optional. Students need to complete a Test-Optional form if that is how they choose to apply. If they have further questions, they should reach out to their admissions counselor.

Do you offer internships or have career development/internships?

Our Center for Career Development is a lifetime service for students and starts their freshman year. We have counselors available to help guide students through the internship process, interview process, and how to use LinkedIn. We also host career fairs each semester, and we have internships locally as well as in nearby cities such as D.C., Baltimore, and Philly.

What academic resources are available?

Washington College offers free tutoring services for students. These include the Writing Center, the Quantitative Skills Center, and the Office of Academic Skills. The Writing Center and Quantitative Skills Center offer student-led tutoring by upperclassmen who have already completed and excelled in their classes. The Office of Academic Skills provides help and accommodations for students with accessibility or other needs.

What type of housing is available for students?

We are a 4-year residential college. We require students to live on campus, however, there are some exceptions (local commuting students, non-traditional students, etc.) Both housing and parking are guaranteed for all 4 years. Freshman year, students will live with one other roommate. Starting sophomore year, they can apply to live in suite-style housing. First-year roommate selection is based on a survey that students fill out, but specific roommate requests can be made on the selection survey.

Thank you!

We know this is a lot to take in. If you have any further questions, please reach out to Jillian Curran at jcurran3@washcoll.edu or call her at 410-810-5808. We're thrilled to welcome you to the Watershed program and look forward to working with you going forward!